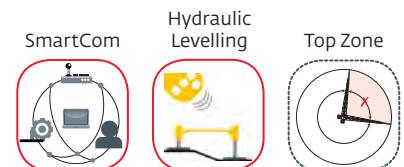
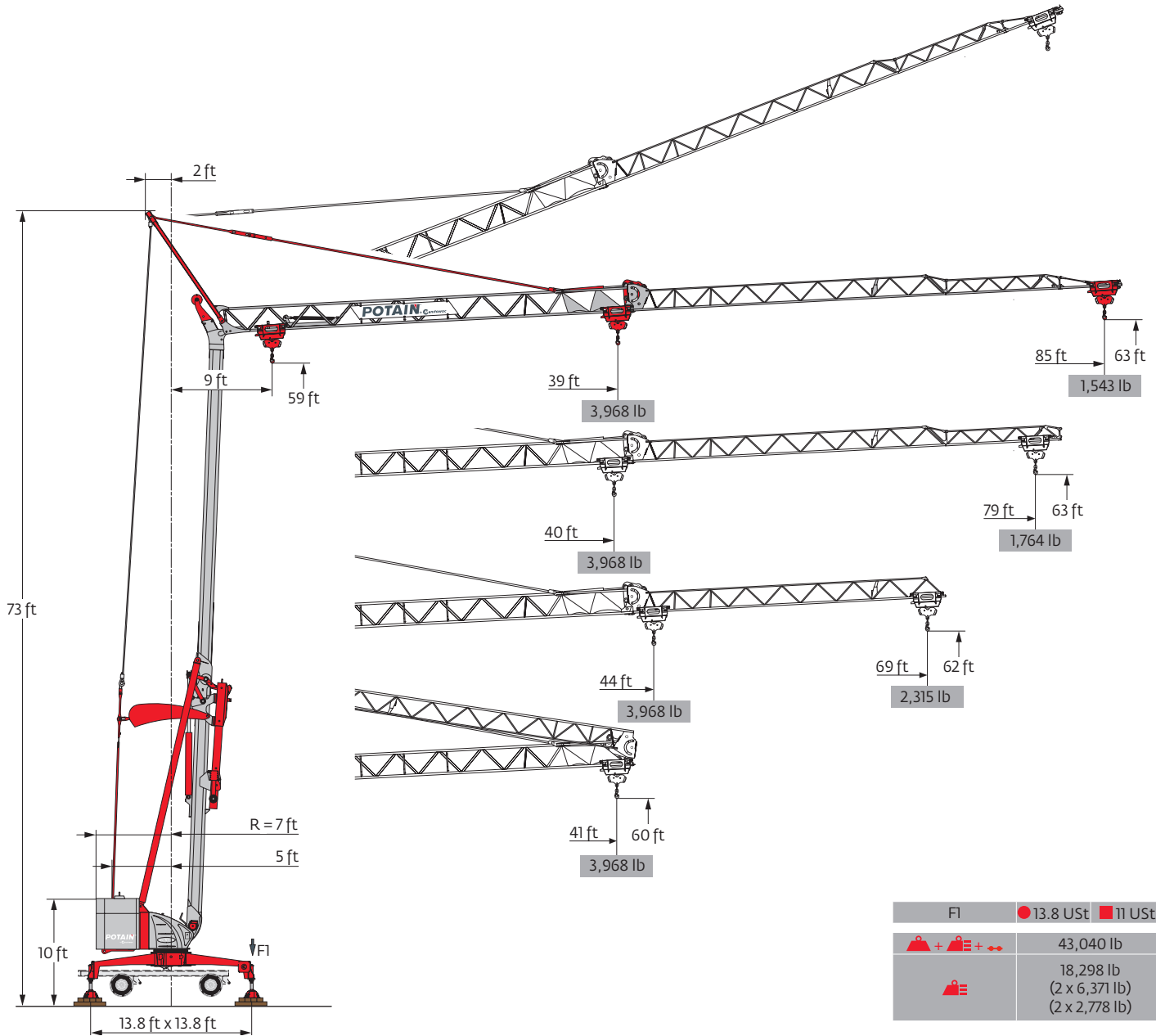
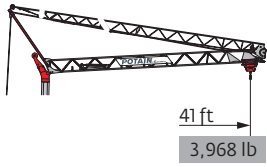


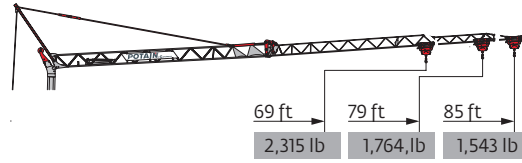
Igo MA 21



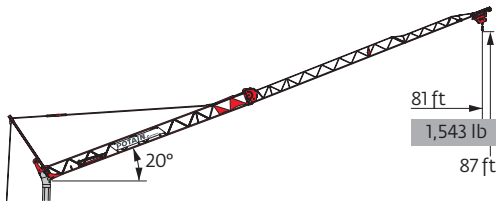
Load curves



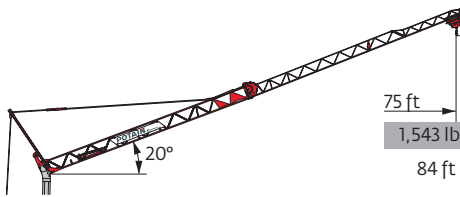
| | | | | |
|-------|---|---|-------|----|
| 85 ft | 9 | ▶ | 41 | ft |
| ▲▲▲▲ | ▲ | | 3,968 | lb |
| 79 ft | 9 | ▶ | 41 | ft |
| ▲▲▲▲ | ▲ | | 3,968 | lb |
| 69 ft | 9 | ▶ | 41 | ft |
| ▲▲▲▲ | ▲ | | 3,968 | lb |



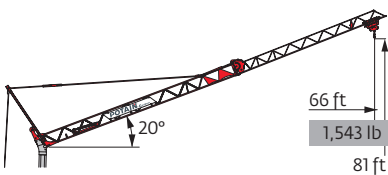
| | | | | | | | | | | | | | | | | | |
|---|---|-------|-------|-------|-------|-------|-------|-------|-------|-------|-------|-------|-------|-------|-------|-------|----|
| 9 | ▶ | 39 | 43 | 46 | 49 | 52 | 56 | 59 | 62 | 66 | 69 | 72 | 75 | 79 | 82 | 85 | ft |
| | | 3,968 | 3,594 | 3,285 | 3,020 | 2,789 | 2,590 | 2,414 | 2,260 | 2,127 | 2,006 | 1,896 | 1,797 | 1,709 | 1,620 | 1,543 | lb |
| 9 | ▶ | 40 | 43 | 46 | 49 | 52 | 56 | 59 | 62 | 66 | 69 | 72 | 75 | 79 | ft | | |
| | | 3,968 | 3,715 | 3,384 | 3,120 | 2,888 | 2,679 | 2,502 | 2,337 | 2,205 | 2,072 | 1,962 | 1,863 | 1,764 | lb | | |
| 9 | ▶ | 44 | 46 | 49 | 52 | 56 | 59 | 62 | 66 | 69 | ft | | | | | | |
| | | 3,968 | 3,770 | 3,461 | 3,208 | 2,976 | 2,789 | 2,612 | 2,458 | 2,315 | lb | | | | | | |



| | | | | |
|-------|---|---|-------|----|
| 85 ft | 9 | ▶ | 81 | ft |
| ▲▲▲▲ | ▲ | | 1,543 | lb |





















| | | | | |
|-------|---|---|-------|----|
| 79 ft | 9 | ▶ | 75 | ft |
| ▲▲▲▲ | ▲ | | 1,543 | lb |



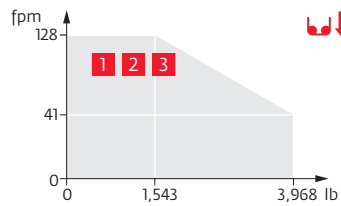
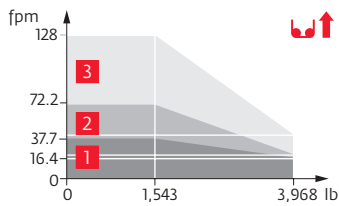
| | | | | |
|-------|---|---|-------|----|
| 69 ft | 9 | ▶ | 66 | ft |
| ▲▲▲▲ | ▲ | | 1,543 | lb |

Mechanisms

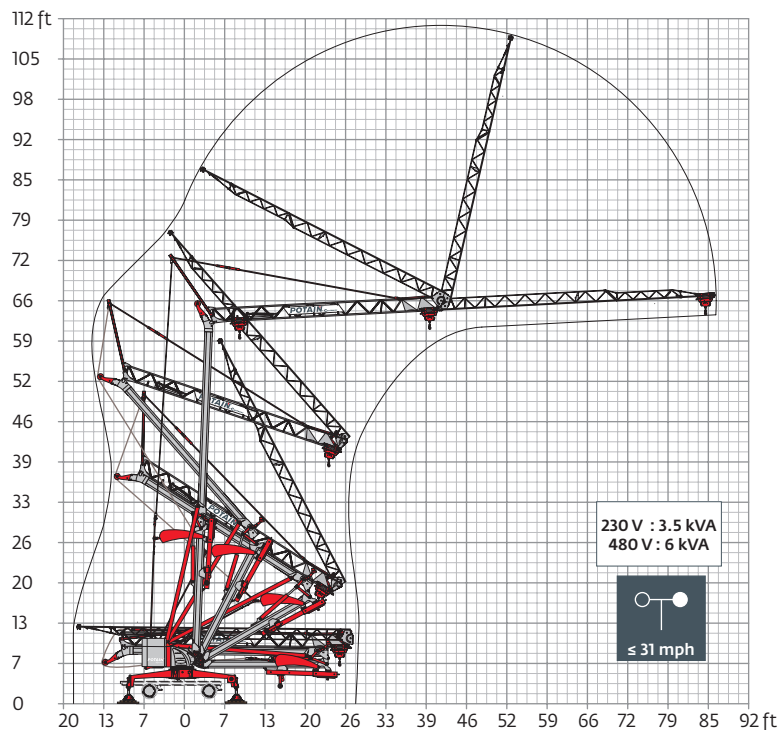
| 230 V - 60 Hz 480 V - 60 Hz | | | | | hp | kW | |
|---|-----------------------|----------------|---|---|-----|-----|-----|
|  | 8 LVF 9 Optima | 230 V \pm | fpm |  11.5  16.4  41  37.7  128 | 3.3 | 2.4 | |
| | | 20 A 1 | lb | 3,968 3,968 1,543 | | | |
| | | 230 V \pm | fpm |  11.5  21.3  41  72.2  128 | 5.2 | 3.8 | |
| | | 32 A 2 | lb | 3,968 3,968 1,543 | | | |
| | | 480 V 3 | fpm |  11.5  41  128 | 7.5 | 5.5 | |
| | | | lb | 3,968 3,968 1,543 | | | |
|  | 1 DVF 4 | fpm | 46 → 118 (0 → 1,543 lb) 46 → 92 (1,543 → 3,968 lb) | | | 1.5 | 1.1 |
|  | RVF 20 | rpm | 0 → 1 | | | 1.5 | 1.1 |

|  IEC 60204-32 |  kVA |
|---|--|
| 230 V (+6% -10%) 60 Hz | 230 V 20A : 4.6 kVA |
| 480 V (+6% -10%) 60Hz | 230 V 32A : 7.4 kVA |
| | 480 V : 11 kVA |

8 LVF 9 Optima

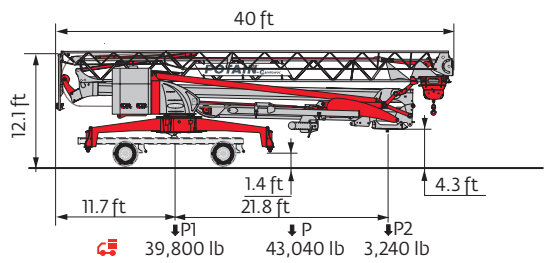
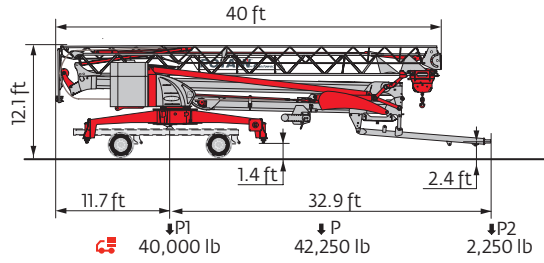


Erection



Transport

NORTH AMERICAN HIGHWAY AXLE (50 mph)



- R Rear slewing radius
- Reactions in service
- Reactions out of service
- Standard equipment
- Options
- ▲ Weight without load, without ballast, without transport axles, with max. jib and standard height
- ▲ Total ballast weight
- ↔ Transport axles
- ⚙️ Transport of crane with full ballast
- ⬆️ Hoisting
- ⬅️ Trolleying
- ⦿ Slewing
- kVA Required power

This commercial document is not legally binding. For any technical information, please refer to the corresponding instructions.

